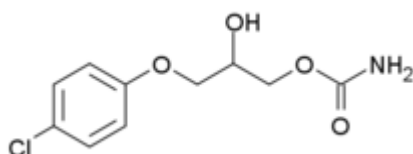


Technical Data Sheet

Suncide CPN

Chlorphenesin

CAS# 104-29-0



Mol. wt. 202.6

Formula C₉H₁₁ClO₃

Description

White or pale cream-coloured crystals, slightly phenolic odour & bitter taste.

It is soluble in 200 parts of water and in 5 parts of alcohol, soluble in solvent ether and in fixed oils. It has a melting point of 78.81°C

Specifications

| Item | Specification |
|------------------------|--|
| Description | White or pale cream colored crystals or crystalline aggregates. Odor slightly phenolic; taste bitter and persistent. |
| Solubility | Soluble in 200 parts of water and in 5 parts of alcohol(95%); soluble in ether, slightly soluble in fixed oils. |
| Identification | To comply with BP tests |
| Assay (Dried basis, %) | Min. 99.00 |
| Melting Range (°C) | 78.0 ~ 81.0 |
| Chlorophenol | To comply with BP test |
| Loss on drying (%) | Max. 1.00 |
| Sulphated ash (%) | Max. 0.10 |

Assay

The product is listed in British Pharmacopea with its physical, chemical properties and analytical specifications.

Uses

Chlorphenesin has antibacterial, antifungal and trichomonocidal activity and is used in the form of Ointments creams & powders for the prophylaxis and treatment in fungal infections of the skin.