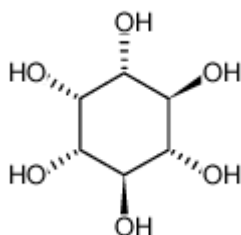


Technical Data Sheet

SFG Inositol

Inositol

CAS# 87-89-8



Mol. wt. 180.16

Formula C₆H₁₂O₆

Description

SFG Inositol is a type of sugar which has similar structure to glucose. It is extracted from high-quality corn and mainly function as a moisturizer in cosmetics. Also it may help to improve the condition of the hair.

Specifications

Item	Specification
Appearance	White crystalline powder
Identification (A.B)	Meets Specifications
Clarity and Color of Solution	Meets Specifications
Loss On Drying	Not more than 0.5 %
Residue On Ignition (%)	≤ 0.1
Assay	≥ 97.0 % and ≤ 102.0 %
Conductivity	≤ 20 μ s cm ⁻¹
Chloride (%)	≤ 0.005
Sulfate (%)	≤ 0.006
Calcium	Meets Specifications
Barium	Meets Specifications
Iron (%)	≤ 0.0005
Heavy Metals (as Pb) (%)	≤ 0.0010
Total Impurities (%)	≤ 1.0
Individual Impurities (%)	≤ 0.3
Lead (mg/kg)	≤ 0.5
Arsenic (mg/kg)	≤ 3
Mercury (mg/kg)	≤ 0.1
Cd (mg/kg)	≤ 0.005
Total Plate Count (cfu/g)	≤ 1000
Mould and Yeast (cfu/g)	≤ 100

Colon Bacillus

Absent

Salmonella

Absent

Complies with USP40-NF35

Storage Keep container tightly closed. Keep container in a cool, well-ventilated area.

Shelf Life 2 years