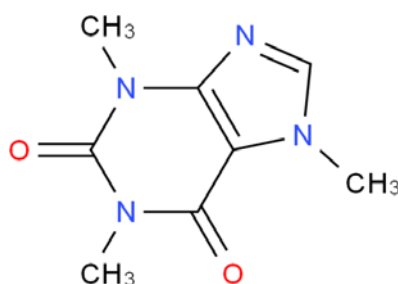


Technical Data Sheet

SFG Natural Caffeine

Caffeine
CAS# 58-08-2



Mol. wt. 194.2
Formula C₈H₁₀N₄O₂

Specifications

Item	Specification
Appearance	A white Crystalline Powder; Sublimes readily
Assay (%)	98.5 ~ 101.0 (Anhydrous basis)
Solubility	Sparingly soluble in water, freely soluble in boiling water, slightly soluble in ethanol and in ether. It dissolves in concentrated solution of alkali benzoates or salicylates.
Identification A	By IR absorption identical with Std.
Identification B	To Comply
Water (%)	Max. 0.5
Melting Range (°C)	235 ~ 237.5
Residue on Ignition (%)	Max. 0.1
Arsenic (ppm)	Max. 3
Heavy Metals (ppm)	Max. 0.001
Readily Carbonizable substances	The solution has no more color than matching Fluid D.
Other Alkaloids	No ppt is formed.
Chromatographic Purity (%)	Max. 0.1
: Any individual impurity	
Total impurity(%)	Max. 0.1
Conforms to USP	

Natural Source

Coffee bean

Storage

Keep in a tightly closed container, stored in a cool, dry, ventilated area.

Shelf Life

5 years